

ANOVATOR M1

More Data, More AI

Medical-Grade Body Composition Intelligent



ANOVATOR

Product Features



Body Composition Analysis	Body Dimensions & Posture
Balance Ability Assessment	

Empowering Clinical Decisions with Data Sovereignty. The **ANOVATOR M1** is a sophisticated diagnostic instrument designed for hospitals, rehabilitation centers, and clinical research. By integrating high-frequency Bioelectrical Impedance Analysis (BIA) with AI-driven big data, the M1 delivers laboratory-grade accuracy in a convenient, non-invasive format.



FDA Certification



CCIC



ISO9001



EU RoHS Certification



CE Certification



CTI Certification



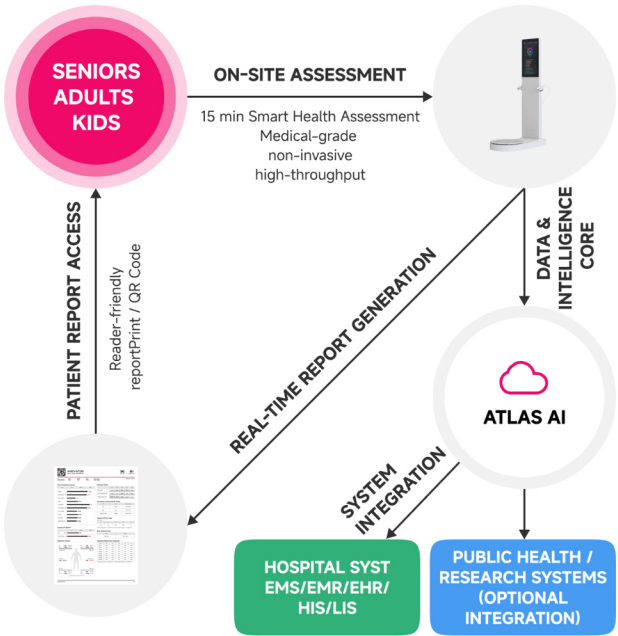
SGS Certification



Class II Medical Devices

Customizable all-in-one medical assessment solution for streamlined workflows and improved clinical efficiency.

Health Assessment Platform



Technical Dominance

Technical Dominance Multi-Frequency BIA Technology: Employs Multiple Signal Frequencies To Ensure Consistent Accuracy Across Diverse Body Types And Clinical Conditions.

97% DEXA Correlation: Proven Reliability.

Medical-Grade Hardware: Equipped With Gold-Plated Electrodes And High-Sensitivity Load Cells For Maximum Conductivity And Zero-Loss Signal Transmission.

30-Second Clinical Scan: Captures Comprehensive Body Composition Metrics In Under 30 Seconds—Optimizing Workflow In High-Traffic Medical Environments.

AI Big Data Engine: Real-Time Comparison Against A Global Database Of Millions, Providing Age-And-Ethnicity-Adjusted Health Benchmarks.

Seamless Data Integration: Secure Cloud Storage Aligned With HIPAA Principles, Supporting Long-Term Patient Tracking And Effortless HIS Synchronization Via HL7/API.

AI-Driven Personalized Health & Nutrition Insights: Accessible To Patients Anytime, Anywhere.

ANOVATOR



EMAIL: INFO@ANOVATOR.COM
WWW.ANOVATOR.COM